

NOTES FOR TFT:

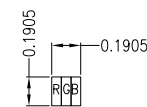
1. DISPLAY TYPE: TFT, TRANSMISSIVE, NORMALLY WHITE
2. OPERATING VOLTAGE: VCC=3.3V (TYP.)
3. VIEWING DIRECTION: 12 O'CLOCK
4. DRIVER IC: EK79713B + EK73202A
5. LED BACKLIGHT: 24-CHIP WHITE LED
BUILT-IN BACKLIGHT DRIVER: VBL=5.0V
6. TOP POLARIZER SURFACE TREATMENT: ANTI-GLARE
7. CN1 PADS RESERVED FOR RGB INTERFACE
CN2 FOR LVDS INTERFACE

NOTES FOR CTP:

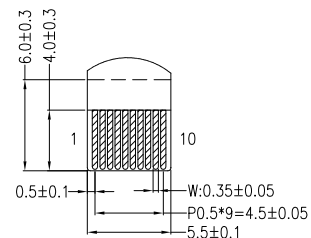
1. 7.0 INCH PROJECTIVE CAPACITIVE TOUCH PANEL
2. COVER GLASS + SENSOR GLASS + FPCA
3. OPERATING VOLTAGE: VDD=3.3V
4. DRIVER IC: FT5426DQ8-003 (SMT)
5. RESOLUTION: 800*480 DOTS
6. MULTI FINGER: UP TO 5
7. HARDNESS OF COVER SURFACE: 7H
8. FIRMWARE FILE:
MI0700CUP-C4_FT5426DQ8-003_FIRMWARE_VOD_20210521-10.50_ALL.BIN

NOTES FOR OTHERS:

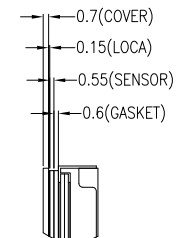
1. OPERATING TEMP.: -20°C ~ 70°C
2. STORAGE TEMP.: -30°C ~ 80°C
3. SURFACE LUMINANCE: 470 CD/M² (TYP.)
4. GENERAL TOLERANCE: ±0.3MM
5. ROHS COMPLIANT



DETAIL A
(SCALE 40:1)



DETAIL B
(SCALE 4:1)



DETAIL C
(SCALE 2:1)

PIN ASSIGNMENT FOR LCM	
PIN	SYMBOL
1	VCC
2	VCC
3	VSS
4	VSS
5	INO-
6	INO+
7	VSS
8	IN1-
9	IN1+
10	VSS
11	IN2-
12	IN2+
13	VSS
14	CLK-
15	CLK+
16	VSS
17	BL_ADJ
18	VBL
19	VSS
20	VSS
PIN ASSIGNMENT FOR CTP	
PIN	SYMBOL
1	GND
2	VDD
3	SCL
4	NC
5	SDA
6	NC
7	/RST
8	NC
9	/INT
10	GND

MULTI-INNO TECHNOLOGY CO., LTD.			
DRAWN BY:	RITA	20220318	MODULE P/N:
CHECKED BY:			MI0700A2T-30CP1
APPROVED BY:			DESCRIPTION:
VERSION NO:	01		TFT + CTP MODULE
SCALE : 1/1		UNIT: mm	SHEET No.: 1/1

01	FIRST ISSUE	RITA	2022.03.18
VER.	REVISED DESCRIPTION	REVISER	DATE